



Email:  
[enquiry@nickelbros.com](mailto:enquiry@nickelbros.com)

## **IMPOSING ISABELL**

<b>Reference #:</b>	02-23-946	
<b>Price:</b>	\$196,000 CAD	
<b>Location:</b>	South Island, British Columbia	
<b>Local Office:</b>	Vancouver Island	
<b>Home Style:</b>	Custom	
<b>Square Footage:</b>	2,400 sqft	
<b>Dimensions:</b>	45'9" X 70'	
<b>Bed(s):</b>	4	
<b>Bath(s):</b>	2	
<b>Window:</b>	Thermal Vinyl	
<b>Heat:</b>	Electric Heat	
<b>Floor:</b>	Laminate	
<b>Roof:</b>	Asphalt Shingle	

## **Features**

Looking for a big bold house? This 4 bedroom 2 bath contemporary home has all the space and room for family living. With its open plan featuring a large kitchen it gives this home a modern flavour. The expansive primary bedroom with ensuite completes the functionality.

This large home has had upgraded exterior including new roof and windows.

Call your local office office if you have questions or would like to view this large home!

Status available

Reference Number 02-23-946

Price 196000

Price Currency cad

Size 2400

Dimensions 45'9" X 70'

Bedrooms 4

Bathrooms 2

Windows Thermal Vinyl

Floors Laminate

Roof Asphalt Shingle

Exterior Hardy Board

Heat Type Electric Heat

Home

Gallery















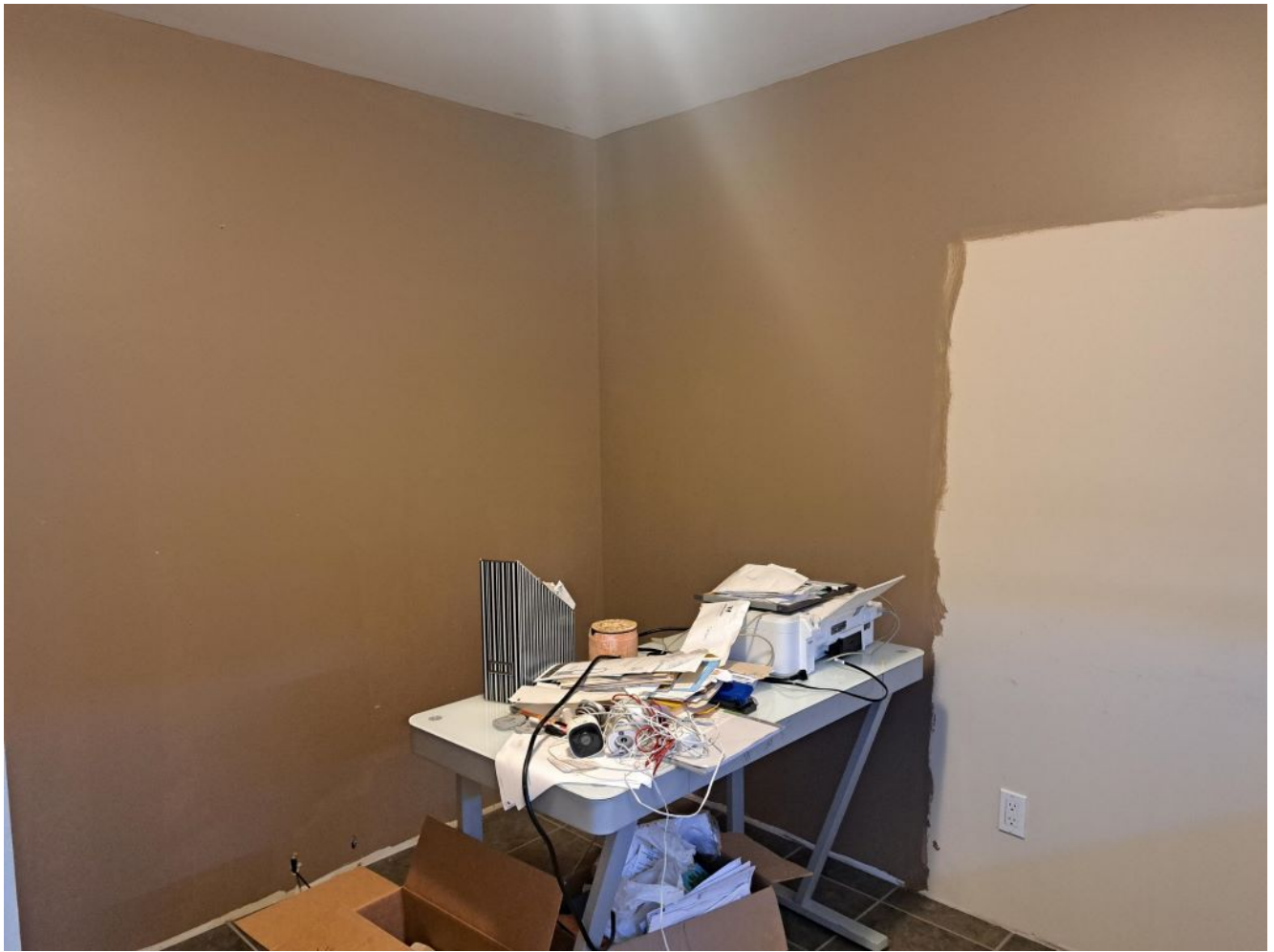


























See the listing online at <https://www.nickelbros.com/residential/homes/imposing-isabell/>.

---

*Price includes house with local delivery and lowering onto foundation. Prices may vary based on final location, site accessibility, utility line work involved and/or barging requirements.*