




Email:
enquiry@nickelbros.com

Pratt Coach House

Reference #:	01-21-34031	
Price:	\$64,500 CAD	
Location:	British Columbia	
Local Office:	Port Coquitlam	
Home Style:	Coach House	
Square Footage:	670 sqft	
Dimensions:	24' x 28'	
Bed(s):	2	
Bath(s):	1	
Window:	Single Pane	
Heat:	Electric Heat; Forced Air Gas	
Floor:	Hardwood; Laminate; Tile	
Roof:	Asphalt Shingle	

Features

This smaller Coach house, located next to our 50's Pratt Rancher, has similar built in closet features with a nicely finished kitchen and floors.

Status sold

Reference Number 01-21-34031

Price 64500

Price Currency cad

Size 670

Dimensions 24' x 28'

Bedrooms 2

Bathrooms 1

Windows Single Pane

Floors Hardwood; Laminate; Tile

Roof Asphalt Shingle

Heat Type Electric Heat; Forced Air Gas

Home

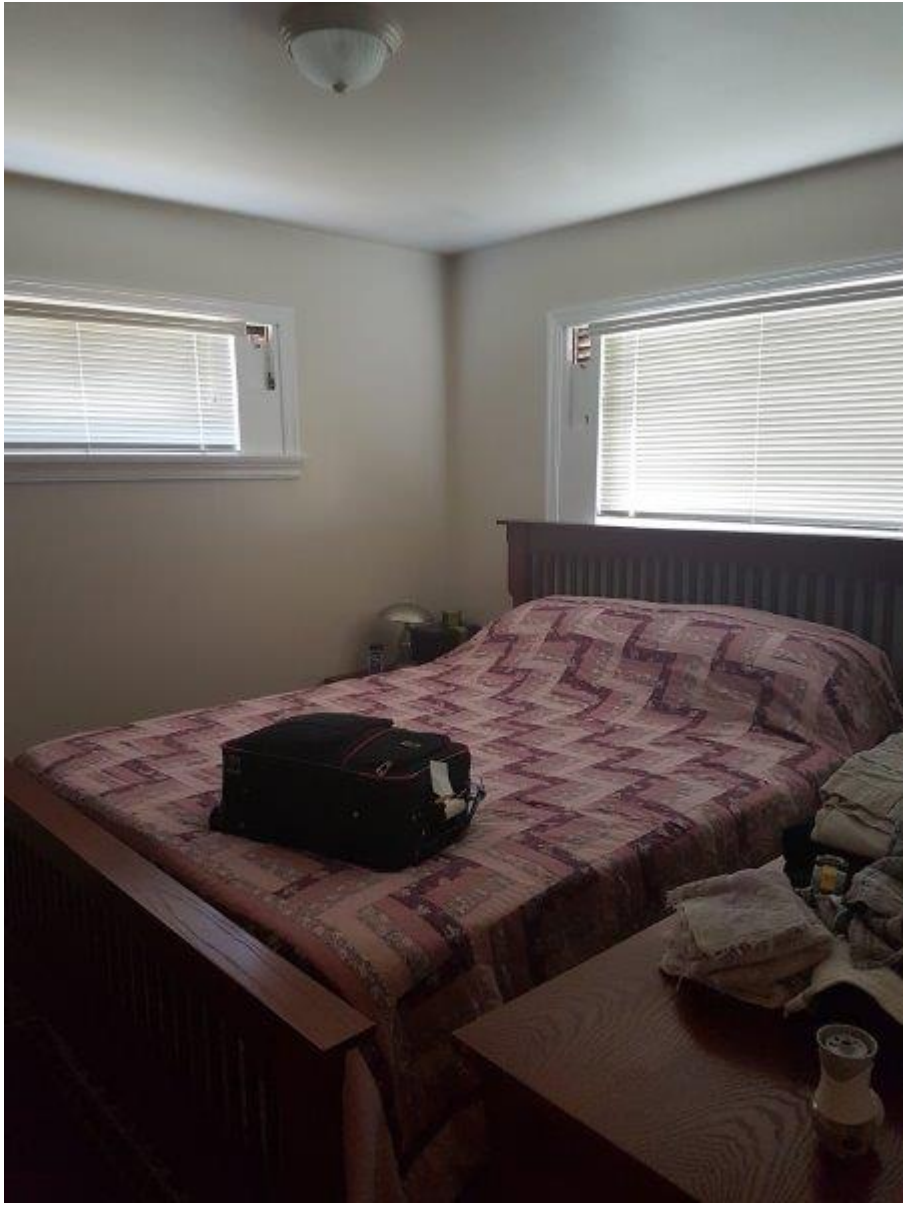
Gallery















See the listing online at <https://www.nickelbros.com/residential/homes/pratt-coach-house/>.

Price includes house with a local delivery and installation. Prices may vary based on final location, site accessibility, utility line work involved and/or barging requirements.