




Email:  
[enquiry@nickelbros.com](mailto:enquiry@nickelbros.com)

## CAMPBELL CLASSIC

<b>Reference #:</b>	02-21-517	
<b>Price:</b>	\$79,000 CAD	
<b>Location:</b>	North Island, British Columbia	
<b>Local Office:</b>	Vancouver Island	
<b>Home Style:</b>	Bungalow	
<b>Square Footage:</b>	732 sqft	
<b>Dimensions:</b>	23' X 33'	
<b>Bed(s):</b>	2	
<b>Bath(s):</b>	1	
<b>Window:</b>	Thermal Vinyl	
<b>Heat:</b>	Forced Air; Electric Heat	
<b>Floor:</b>	Linoleum; Carpet	
<b>Roof:</b>	Asphalt Shingle	

## Features

ACT FAST TO SAVE THIS HOME FROM THE LANDFILL!

This is the perfect size charming home for a secondary suite on your property. With the potential of rental income you could have this cottage moved, lowered and settle right in and start collecting those rent cheques!

The newer furnace gives this home the cozy feel you'll enjoy in those cold winter months. With a lower roofline and not too wide, this would be a fairly easy mover!

Call your local office today and book a showing ASAP!

Status available

Reference Number 02-21-517

Price 79000

Price Currency cad

Size 732

Dimensions 23' X 33'

Bedrooms 2

Bathrooms 1

Windows Thermal Vinyl

Floors Linoleum; Carpet

Roof Asphalt Shingle

Exterior Vinyl

Heat Type Forced Air; Electric Heat

Home

Gallery































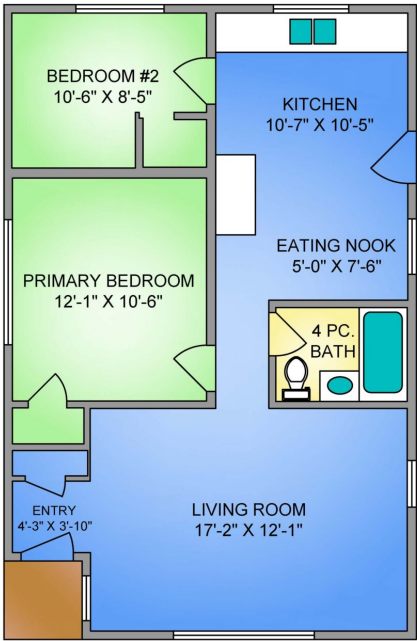




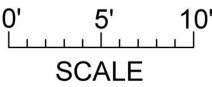




YOUR ADDRESS!  
748 SQ. FT.  
7'-9" CEILING



YOUR ADDRESS HERE! SEPTEMBER 26, 2024	
<small>Prepared by PROPER MEASURE MID ISLAND for the exclusive use of NICKEL BROTHERS LTD. Plans may not be 100% accurate. Buyer must verify any critical measurement. Private resale or modification of floor plans to a third party by any individual or entity other than Proper Measure Mid Island is strictly prohibited</small>	
FLOOR	AREA (SQ. FT.)
	FINISHED
TOTAL	748



See the listing online at <https://www.nickelbros.com/residential/homes/campbell-classic/>.

Price includes house with local delivery and lowering onto foundation. Prices may vary based on final location, site accessibility, utility line work involved and/or barging requirements.